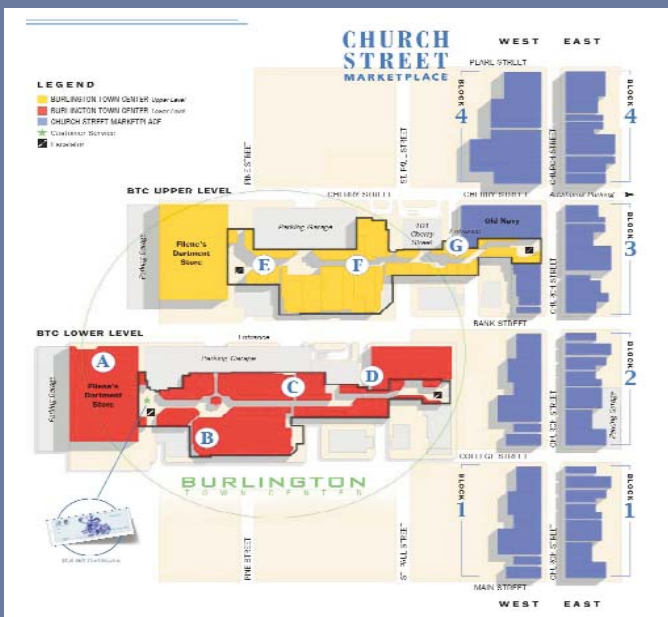


PRIME RETAIL ON CHURCH ST.

Burlington, Vermont

FOR LEASE



FOR LEASE

Location:

22 Church Street, Burlington, VT
Formerly Olympia Sports

Size:

3,400 +/- SF finished with the possibility of up to an additional 2,050 +/- SF on first floor
May also be subdivided

Price:

\$35/SF/NNN* (approx \$11/sf) + utilities

Comments:

55' of high visibility frontage overlooking award winning Church St. Market Place. Neighboring tenants include the Burlington Town Center, Urban Outfitters, Old Navy, Ben & Jerry's, Borders, and more.

* Price based on space undivided

POMERLEAU
REAL ESTATE



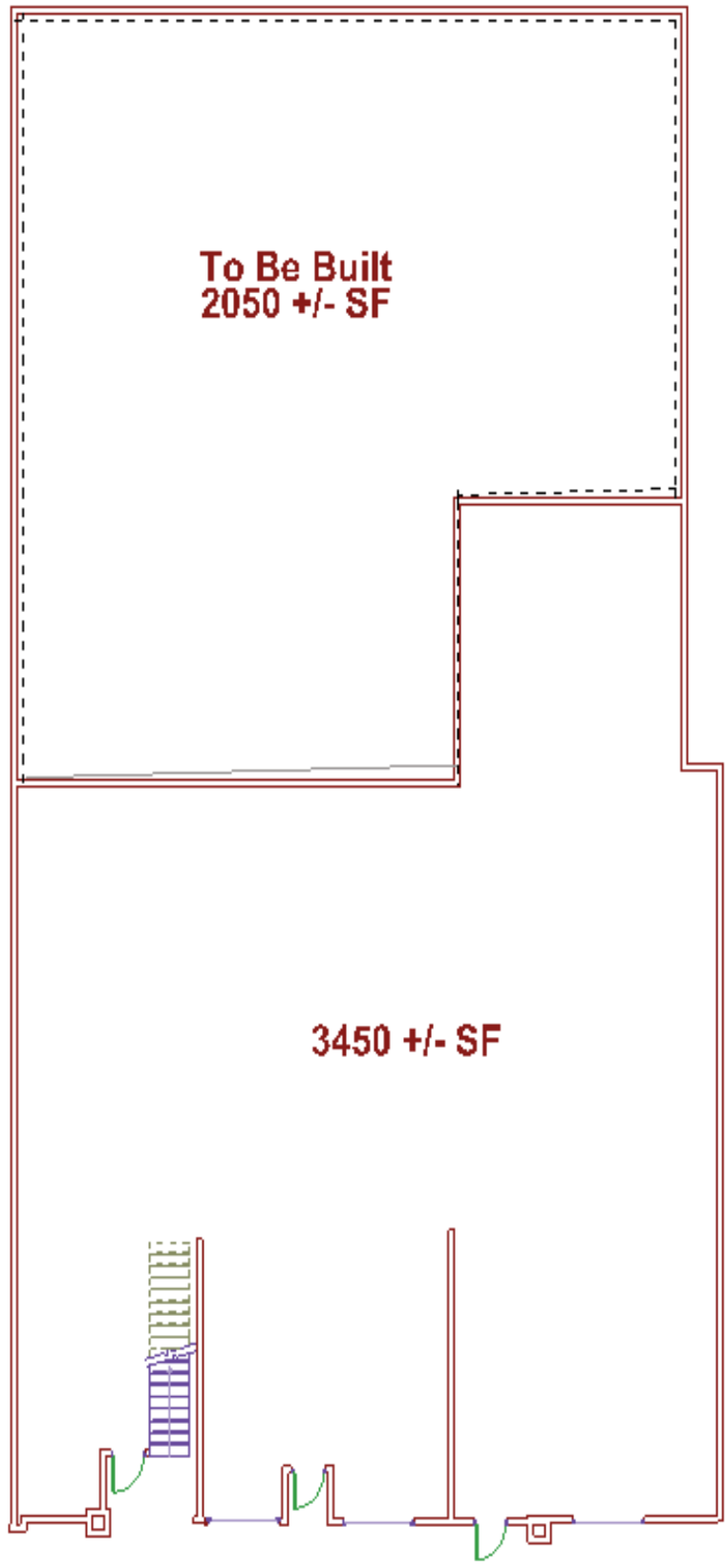
FOR MORE INFORMATION CONTACT

John Rao III 802.863.8210 x 26

jrao@vermontrealestate.com

Yves Bradley 802.863.8210 x 14

ybradley@vermontrealestate.com



**To Be Built
2050 +/- SF**

3450 +/- SF