

www.vermontrealestate.com • 802.863.8210

Kilburn & Gates Building

Burlington, Vermont

For Lease



FOR LEASE

Location:
7 Kilburn Street, Burlington

Size:
5,532+/- SF

Price:
\$13.25/SF NNN (\$4.34/SF)

Features:
Come join the multiple tenants at Kilburn and Gates in this high character office building. Space includes kitchenette, and is presently finished with a combination of open space and many private offices. On-site parking at no charge. Cafe in building, fully ADA accessible.

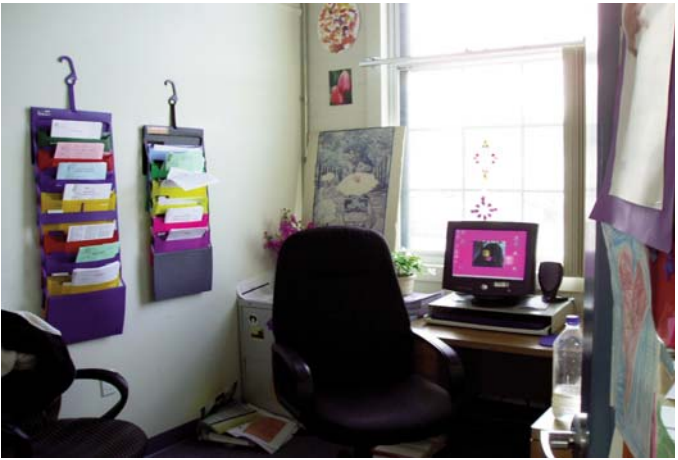
POMERLEAU
REAL ESTATE

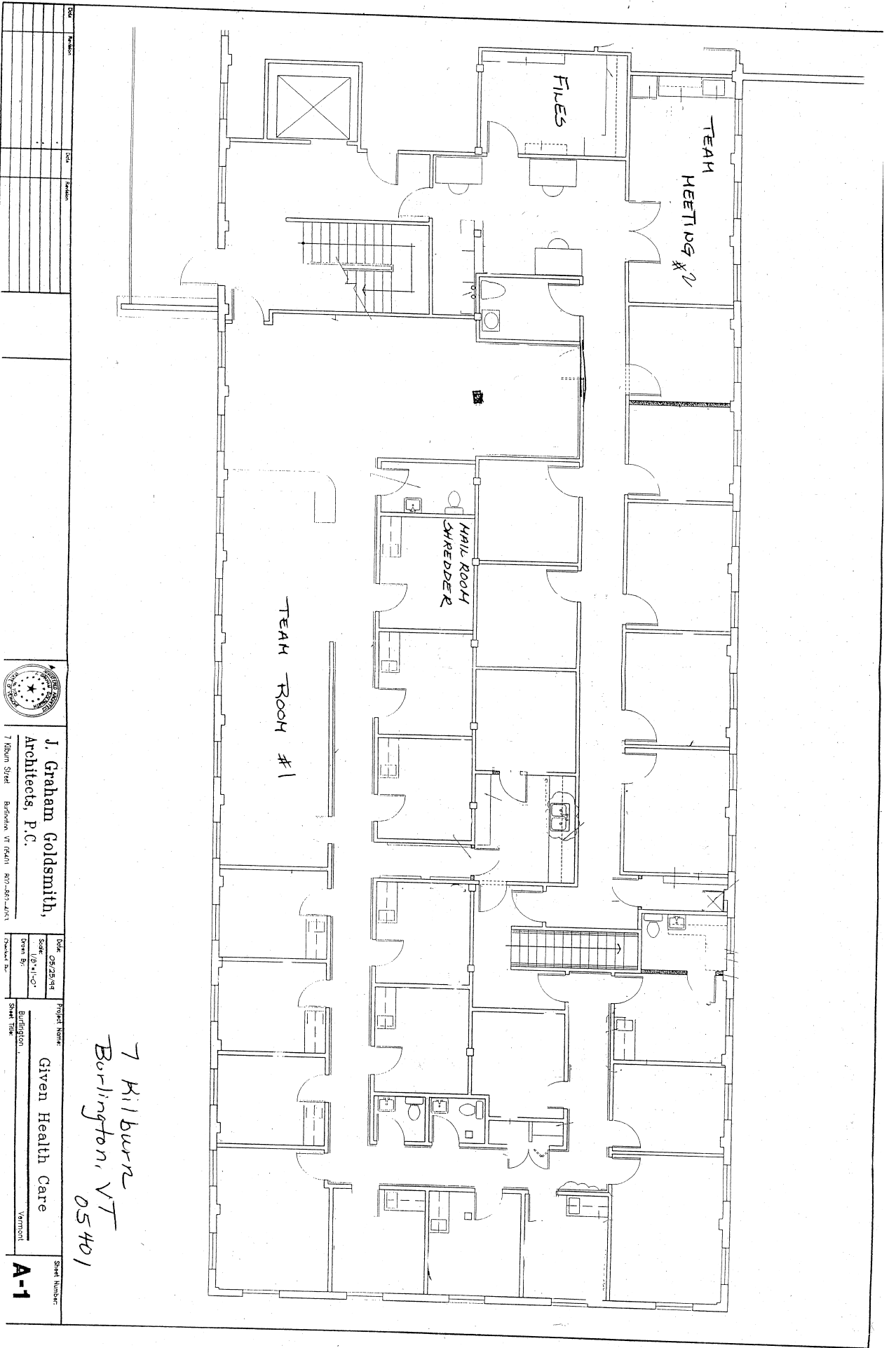


69 College St. Burlington, Vermont | 802.863.8210. www.VermontRealEstate.com

INFORMATION HEREIN IS BELIEVED TO BE ACCURATE BUT IS NOT WARRANTED. ALL FIGURES AND INFORMATION SHOULD BE INDEPENDENTLY CONFIRMED. THIS FLYER IS NOT A LEGALLY BINDING OFFER TO SELL OR LEASE PROPERTY. PLEASE SEEK COMPETENT LEGAL AND FINANCIAL ADVICE. POMERLEAU REAL ESTATE REPRESENTS THE OWNER IN THIS TRANSACTION.

FOR MORE INFORMATION CONTACT
Yves Bradley 802.863.8210 x14
ybradley@vermontrealestate.com





NO.	REVISION	DATE	BY



J. Graham Goldsmith,
Architects, P.C.
 7 Kilburn Street Burlington, VT 05401 802-863-4951

Date: 05/25/94
 Scale: 1/8" = 1'-0"
 Drawn By: [Signature]
 Checked By: [Signature]

Project Name: Given Health Care
 Location: Burlington Vermont
 Sheet Title: [Blank]

7 Kilburn
 Burlington, VT
 05401

Sheet Number: **A-1**