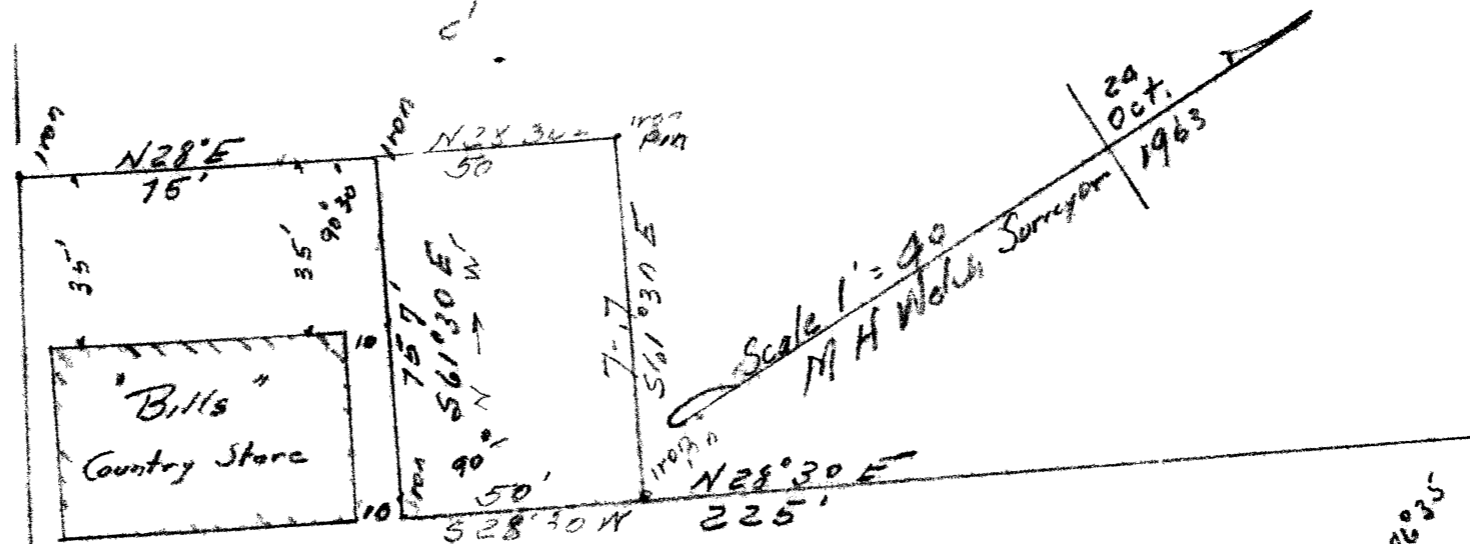


Lands of Fernandez



To Rutland →

Route 4

N 75° 30' W 275'

Surveyed To

Wm E. Radaker and

Jean S Radaker, husband and wife

Sherburne, Vermont Dated Oct 24, 1963

Revised w/ 200 ± on Aug 8 1971  
M H Welch Surveyor

86° 35'

200' S 58° 05' E

92° 15'

± 300  
S 29° 40' W

Large Maple

Lands of Mervine Fernandez

Access Road

To Sherburne Ctr