

# HISTORIC HAIGH MILL

Burlington, Vermont

FOR LEASE



## FOR LEASE - OFFICE

### Location:

112 Lake Street, Burlington

### Size:

1,012 +/- SF - 1st floor

### Price:

\$25.00/SF includes utilities

### Features:

- \* Historic Haigh Mill
- \* On Burlington's waterfront
- \* Common restrooms
- \* Free on-site parking
- \* Great lake and mountain views
- \* Restaurant in building
- \* Available Immediately!

POMERLEAU  
REAL ESTATE

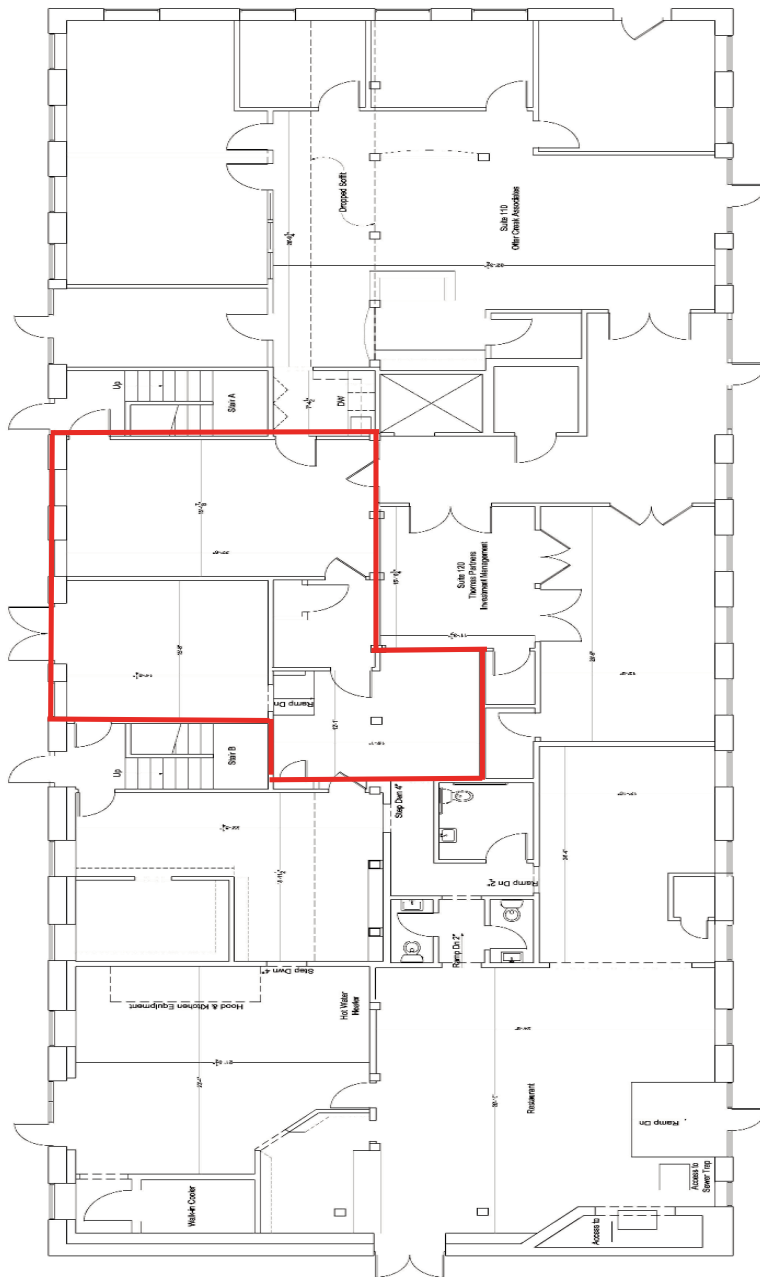


## FOR MORE INFORMATION CONTACT

Pomerleau Real Estate

Yves Bradley 802.863.8210 x 14

ybradley@vermontrealestate.com



- Notes:
1. General dimensions and floor plan review was completed for the first floor.
  2. Any future Tenant fit-up plan will require spot verification of light areas and column intersections.

First Floor Plan



FOR MORE INFORMATION CONTACT  
 Pomerleau Real Estate  
 Yves Bradley 802.863.8210 x 14  
 ybradley@vermontrealestate.com