



# PREMIERE OFFICE SPACE

**WATER TOWER HILL**  
COLCHESTER, VT

354 Mountain View Drive  
Colchester, VT

SIZES: 1,925 | 3,600 | 4,400 +/- SF

RATE: \$12-\$14/SF NNN

NNN's approx. \$8.00/sf (includes heat)

## FEATURES:

- Views of the Green Mountains
- Lots of windows for great natural light
- Mix of open space and private offices
- State of the art monitoring & technology systems
- Conveniently located by interstate 89 at exit 16
- Beautifully landscaped
- Professionally managed with on-site team
- Ample exterior parking space
- Available immediately



## CONTACT



**Yves Bradley**  
802.863.8210 x 14  
ybradley@vermontrealstate.com



**Brad Worthen**  
802.863.8210 x 48  
bworthen@vermontrealstate.com

**POMERLEAU**  
— REAL ESTATE —



69 COLLEGE ST, BURLINGTON, VT  
802.863.8210  
VERMONTREALSTATE.COM

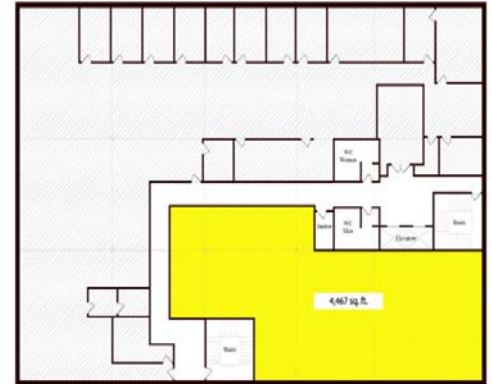
# FLOOR PLAN



354: 3<sup>rd</sup> floor, 1,924 sq.ft.



354: 3<sup>rd</sup> floor, 3,549 sq.ft.



354: 2<sup>nd</sup> floor, 4,467 sq.ft.

## Current Water Tower Hill Tenants



**105** West View Rd.  
77,000 sq.ft. of office space

- Academy Mortgage
- New York Life
- Northeastern Reproductive Medicine
- GSA
- Morgan Stanley



**261** Mountain View Dr.  
60,000 sq.ft. of office space

- Albany College of Pharmacy



**354** Mountain View Dr.  
60,000 sq.ft. of office space

- Mapleleaf Orthodontics
- UVM Medical
- Mortgage Financial
- The Vermont Agency
- Four Seasons Dermatology
- Competitive Computing



**356** Mountain View Dr.  
50,000 sq.ft. of office space

- Adirondack Audiology
- US Department of Agriculture
- VT Interventional Spine Center
- Linear Technology
- One Care VT
- Vertek
- KPMG

